

Neue Mälzerei

Historic charm

.. original brick walls, domed rooms steeped in history

Flexible

.. 1 hall and 5 seminar rooms all on one floor, walls can be opened or closed for effective and flexible use of space

Variously usable

.. for conferences, workshops, product presentations and events

Full service

.. catering, audiovisual equipment, furnishings, staff, branding

Easy to get to

.. 2 km from Alexanderplatz

Green

.. green electricity supply, event ticket from German Rail (DB), EMAS certified



Neue Mälzerei

compact and versatile



At a glance

- ✓ 800 m²
- ✓ 140 people (in row)
- ✓ 1 hall und 5 seminar rooms
- ✓ up to 5 m high ceilings
- ✓ daylight in all rooms
- ✓ Own restaurant on the ground floor

Räume	M ²	L x W	Height	Row	Parl.	Banq.	U	Circle	Recpt.	Dayl.
Plenary hall	130	20,2 x 6,4	2,8	140	74	80	46	60	140	●
Domed hall n/s	95	10 x 9,5	5,0	79	44	50	26	40	75	●
Lobby	110	17 x 6,4	2,8						75	●
Lounge	60	10 x 6,4	2,8			32			50	●
Seminar room I	47	7,4 x 6,4	2,8	45	24	30	18	26	45	●
Sem. room II	51	8 x 6,4	2,8	54	24	30	20	26	25	●
Sem. room III	30	4,6 x 6,4	2,8	23	15	20	16	22		●
Sem. room I+II	98	15,4 x 6,4	2,8	107	57	70	38	45	60	●
Malzküche	170	18 x 11,5	3,4			70				●
Terrace	72	6 x 12				48			60	●



Arrival

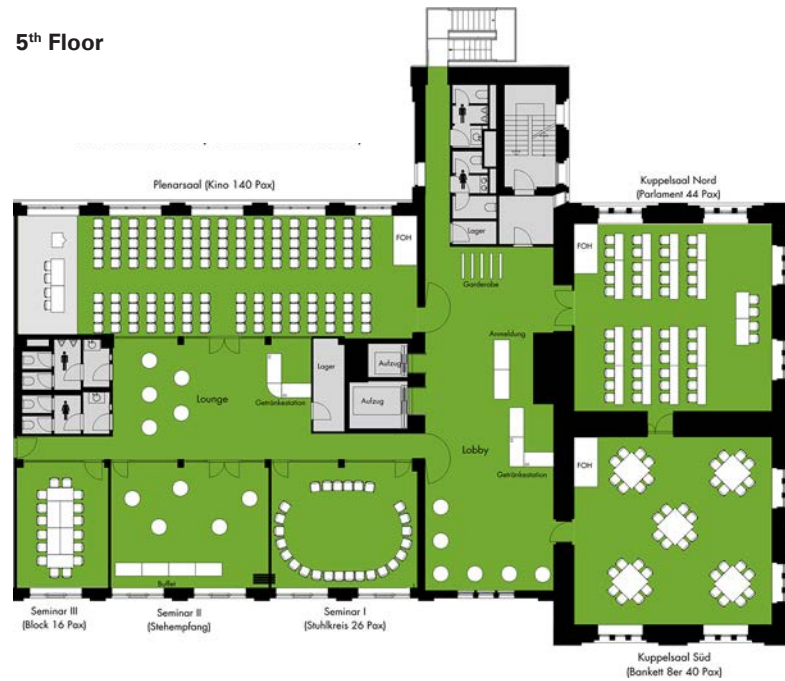
- Underground: U5 bis Strausberger Platz, exit Lebuser Str., 3 min. walk
- Tram: M5, M6 and M8 to Platz der Vereinten Nationen, 3 min. walk
- Bus: 142 from Hauptbahnhof or Ostbahnhof to Friedrichsberger Straße, 2 min. walk

Neue Mälzerei

800 m² event space for up to 140 people



5th Floor



Ground floor (Restaurant Malzküche)

