

Events at Spielfeld

From a single-product
to a multi-product
business.

1. Payments.

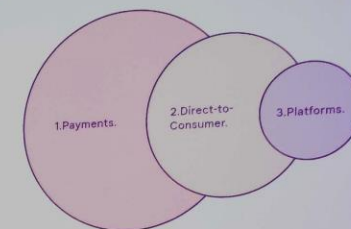
- / Klarna Checkout
- / Pay Now, Pay Later, Slice it
- / Tools and Address services (Boost, In-store)
- / Consumer post purchase (Klarna App)

2. Direct-to-Consumer.

- / Klarna Card (Klarna App)
- / In-app shopping browser

3. Platforms.

- / Open Banking Platform
- / Customer Authentication



K.

The space for
unforgettable events in Berlin

SPIELFELD

About Us

Spielfeld is a **climate neutral coworking and event space** spread out over **3000 m²** and located in the heart of Berlin. Our event venues are perfect **for conferences, presentations, workshops, streaming** or **networking events**. Meeting rooms are great for productive **brainstorming** or **design sprints** and include teleconferencing and video tech for online collaboration.

Our charming red brick building is a protected historical landmark from the year 1927 and was previously a bank and post office. The newly renovated interior integrates the building's industrial structure with sleek, creative design elements.



Services



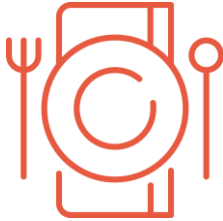
Event Management



Guest Wi-Fi



Workshop & Ideation Material



Catering & Drinks



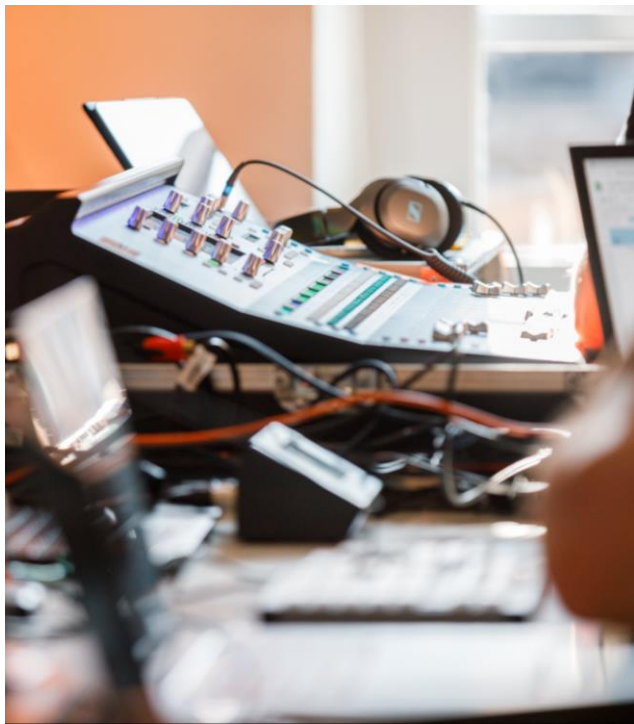
Hybrid & Virtual Event Solutions



Technical Support



Photo & Videographer





Hall of Fame



Stadium



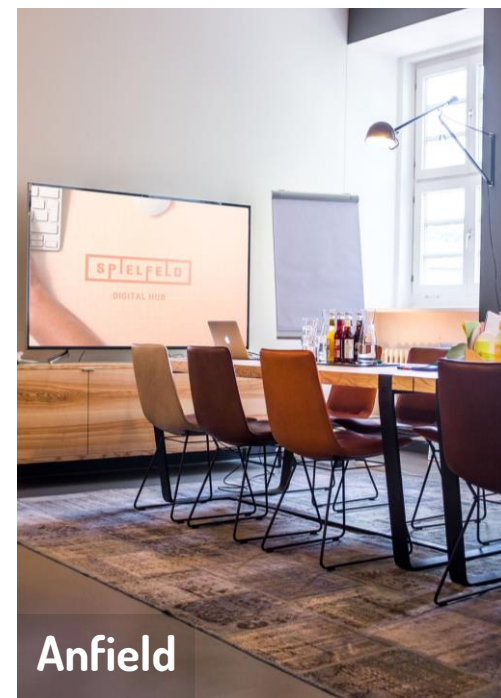
Bistro



Warm-Up



Olimpico



Anfield



Maracanã



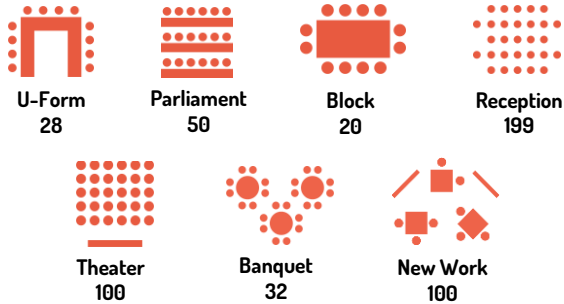
Twickenham & Murrayfield

Hall of Fame

Size: 195 m²
Floor: Ground floor
(wheelchair accessible)

- Equipment:**
- Projector and screen
 - Professional lighting and sound
 - Two handheld microphones
 - Conference seating
 - Workshop furniture
 - Workshop materials

Seating & Capacity :

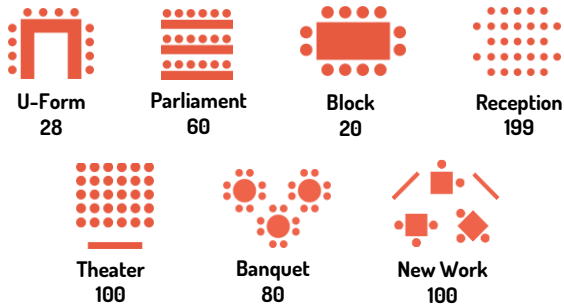


Stadium

Size: 180 m²
Floor: Ground floor
(wheelchair accessible)

- Equipment:**
- Projector and screen
 - Professional lighting and sound
 - Two handheld microphones
 - Conference seating
 - Workshop furniture
 - Workshop materials

Seating & Capacity :



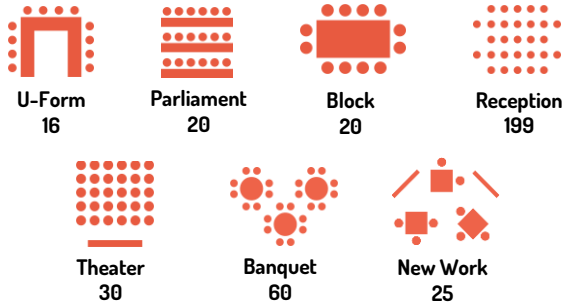
Bistro

Size: 112 m²
Floor: Ground floor
(wheelchair accessible)

- Equipment:**
- Projector and screen
 - Professional lighting and sound
 - Dimmable lighting
 - Bistro furniture
 - Fully-equipped bar



Seating & Capacity :



Warm-Up

- Size:** 50 m²
- Floor:** Ground floor
(wheelchair accessible)
- Equipment:**
- Projector
 - Whiteboard
 - Flip chart
 - Pinboard
 - Video conferencing equipment
 - Speakers
 - Workshop furniture
 - Workshop materials

Seating & Capacity :



Block
14



U-Form
16



Theater
25

Warm-Up is often booked together with Stadium and used as a breakout room, coat check or catering area.



Eden Park

Size: 33 m²

Floor: Ground floor

- Equipment:**
- Large TV screen
 - Pinboard
 - Whiteboard
 - Workshop materials
 - Lounge furniture*



Seating & Capacity :



*Additional furniture available upon request.

Meeting Rooms

Equipment:

- TV screen or projector
- Whiteboard
- Flip chart
- Pinboard
- Video conferencing equipment
- Speakers
- Workshop materials

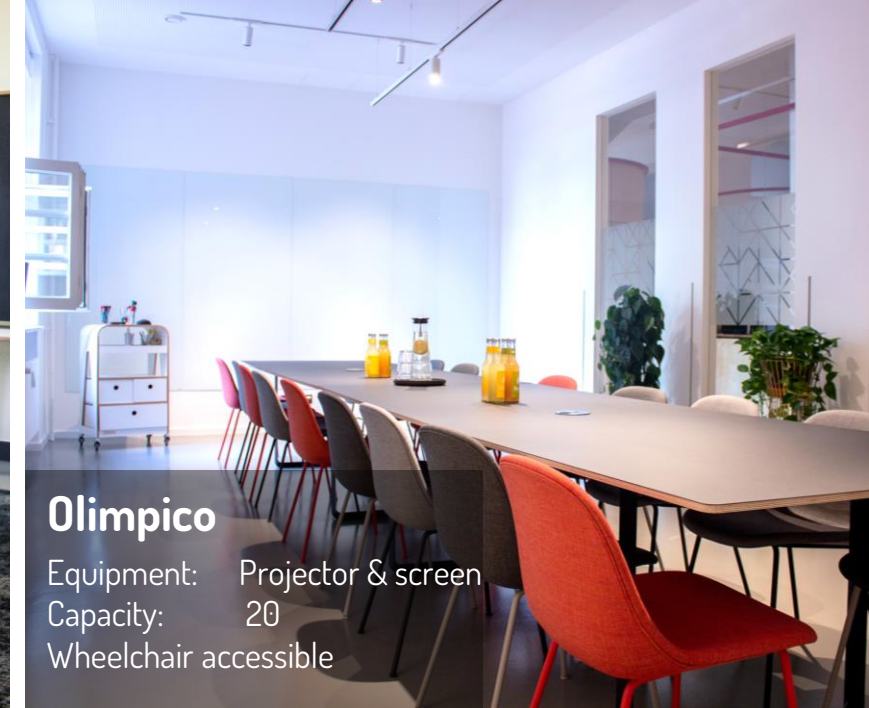
Seating:

Meeting rooms are usually arranged in block seating with a large boardroom desk and chairs. Additional furniture arrangements are available upon request.



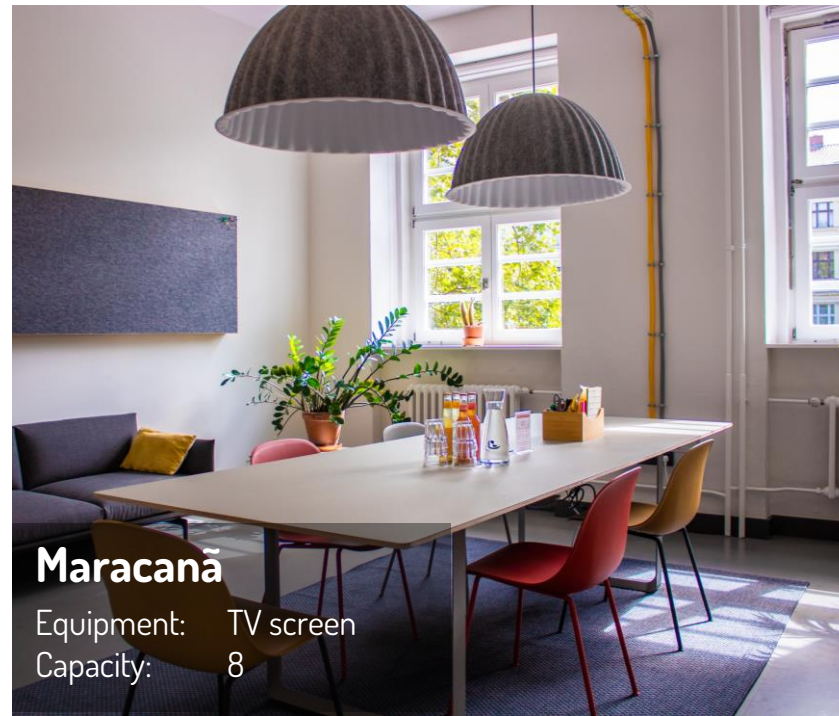
Anfield

Equipment: TV screen
Capacity: 12



Olimpico

Equipment: Projector & screen
Capacity: 20
Wheelchair accessible



Maracanã

Equipment: TV screen
Capacity: 8



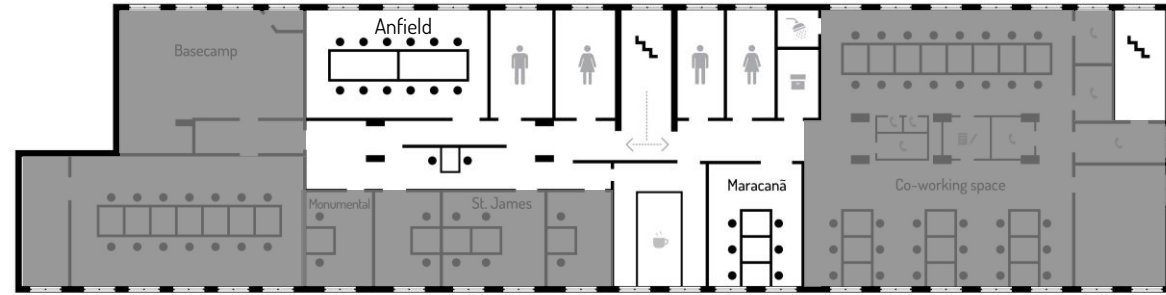
Twickenham & Murrayfield

Equipment: TV screen
Capacity: 6
Wheelchair accessible

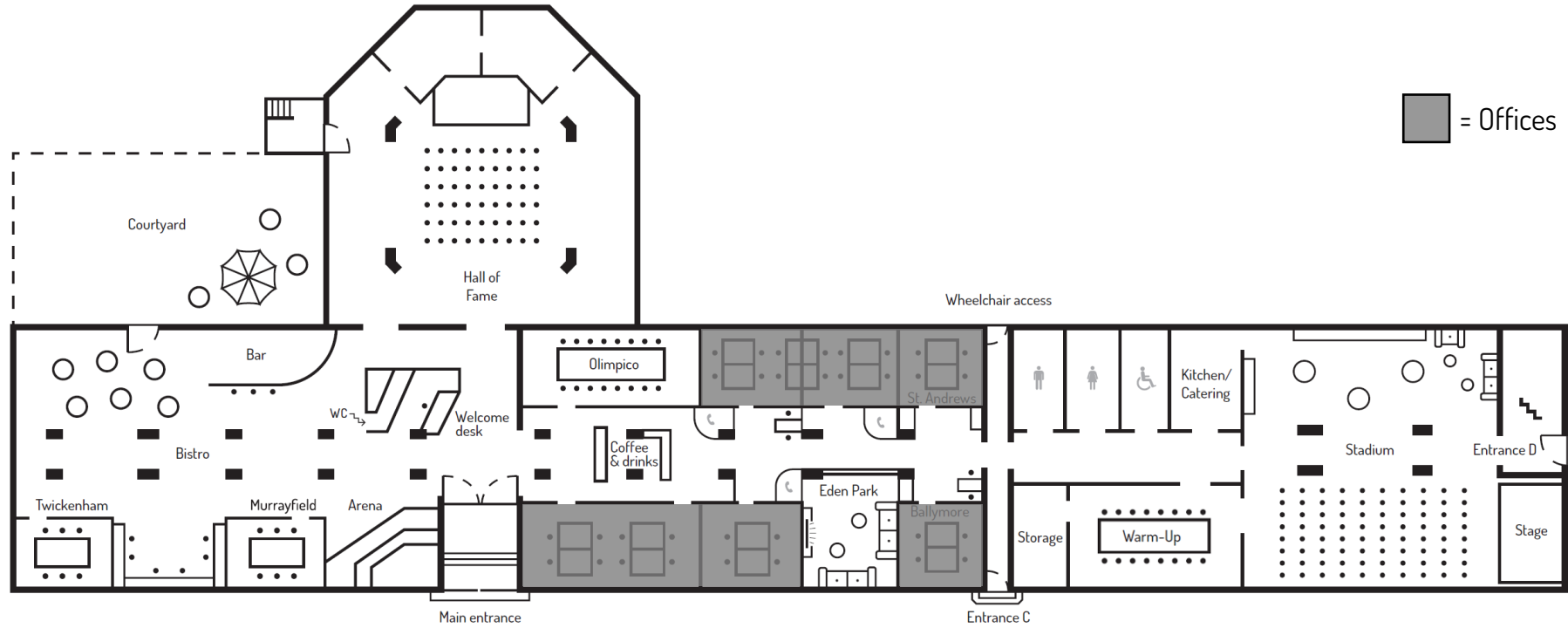


Floor Plan

Second Floor



Ground Floor



■ = Offices

How to find us



Lidl

McDonald's

Privatclub

Spielfeld
Main Entrance

SPIELFELD

SPIELFELD

Accessibility

Everyone is welcome at Spielfeld and our team is committed to making our space accessible to as many people as possible.

Arrival: Our main entrance is located on Skalitzer Strasse at the above address. The main entrance and welcome desk are located through the sliding glass doors at the center of the building. There are two entrances to the building with ramp access - both entrances require a key to gain access to the building. **For step-free access to our space, please call our front desk team who will happily assist: +49 159 01676131**

Our Space: Our space includes a combination of offices, meeting rooms and event venues on four floors. Toilets are located in the underground level, ground, first and second floors. There is a wheelchair accessible toilet located on the ground floor.

Wheelchair access is limited to the ground floor. Unfortunately, we do not have an elevator.

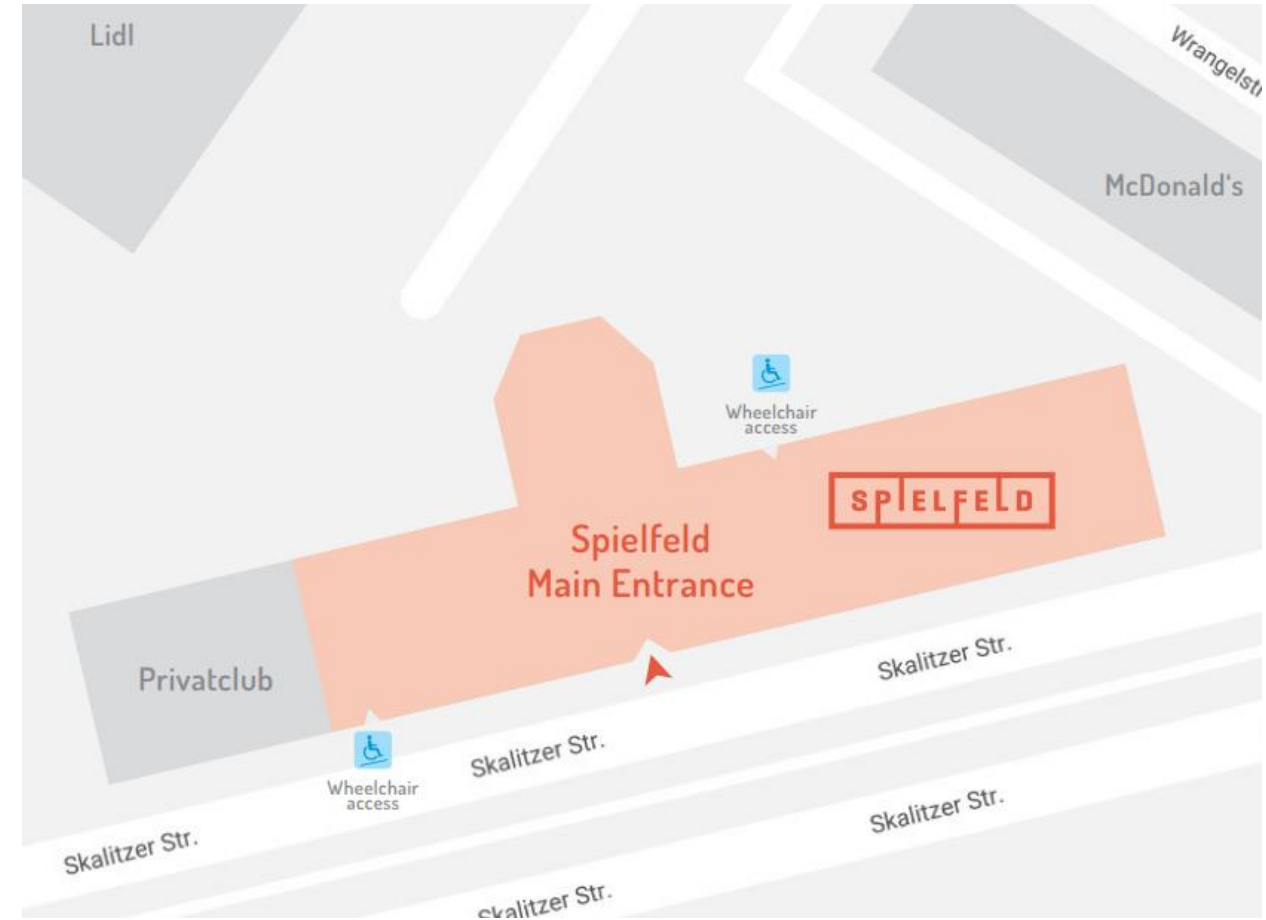
The following wheelchair accessible event venues are on the ground floor:

[Hall of Fame](#), [Bistro](#), [Stadium](#).

The following wheelchair accessible meeting rooms are on the ground floor:

[Olimpico](#), [Warm Up](#), [Twickenham](#), [Murrayfield](#).

For more detailed information about how to make your event more accessible, please [contact our event team](#).



Our Team

Claudia Klune Pereira

Senior Event Manager
claudia@spielfeld.com
Tel: +49 160 7443590

Vinzenz Vu

Event Manager
vinzenz@spielfeld.com
Tel: +49 162 7127450

Sascha Di Carlo

Event Manager
sascha@spielfeld.com
Tel: +49 175 5030293

Hannah Hoss

Event Manager
hannah@spielfeld.com
Tel: +49 171 79400922

Please send inquiries to:

booking@spielfeld.com or +49 30 66701209

Spielfeld Digital Hub GmbH | Skalitzer Str. 85/86 | 10997 Berlin

Claudia



Vinzenz



Sascha



Hannah

